

LJSTAR
INCORPORATED
You'll Look Better.



**Product
Catalog**



Sight Glass Lights (Luminaires)

Our sight glass lights illuminate process vessel interiors in pharmaceutical, food processing, and chemical plants. Choose from standard and explosion-proof (EX-light) housings in halogen or LED designs.



LumiStar™ Light Series

Unprecedented, penetrating illumination, up to four times brighter than a typical halogen luminaire

- Available with 1000, 2000, and 3000 lumens options
- NEMA 4x, IP 65
- 24 V and 110-240 V
- Power: up to 40 W
- Push button on/off switch available
- Flashlight mode (momentary), timed mode
- Temperature control on 2000 and 3000 models
- Bracket mount and sanitary tri-clamp connection available
- Crevice-free, washdown-safe

LumiFlo®

- FDA-compliant silicone enclosure with antimicrobial additives which will not yellow
- Designed to prevent microbial and mildew growth using nano materials
- Easily and securely attaches mechanically under the sight glass thru-bolts without the use of additional fasteners due to its omega shaped design
- Perfect color temperature light output from LED tube, with 98% CRI to identify actual process flow colors
- Easy installation and replacement with no need to modify or disassemble sight glass
- Operating Voltage: 24 VDC with M12 Connection
- Watertight seal for external Clean-In-Place (CIP) maintenance
- Battery pack accessory kit delivers several hours of power for remote hard to wire locations
- Optional light shield easily clips onto the back of light, reduces unwanted glare



Explosion Proof Lights

Environmentally sealed, designed to meet UL and ATEX explosion proof ratings. Small to large, traditional halogen to LED and fiber optic for vessel sight glass view ports, dedicated light ports, and flow indicators.

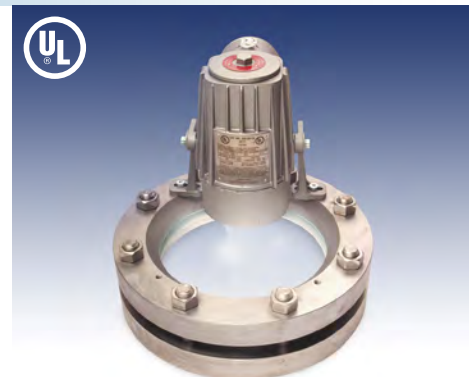


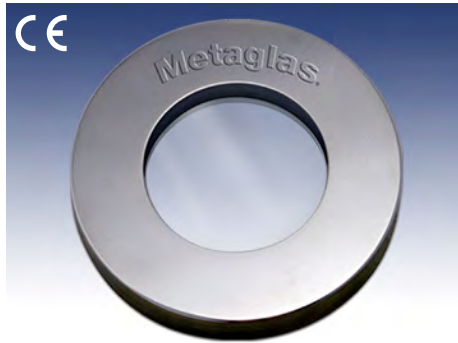
LumiGlas® 55-EX LED

- Up to 1000 lumens, 6-LED technology
- 24V, 120-230V AC/DC
- Power: up to 15 W
- Explosion proof: Gas Zones 1 and 2, Dust Zones 21 and 23
- ATEX certified
- Stainless steel or aluminum housing options
- Size: 78 dia. x 163 mm length

LumiGlas USL 08-EX Halogen

- 120 V DC
- Power: 30, 50, 100 W
- Explosion proof: UL approved for Class 1, Division 1 and 2, Groups C and D
- Suitable for wet conditions (UL 844 & 1571)
- Aluminum housing
- Bracket mount next to sight window or flush mount over light port
- Size: 5-1/8" wide x 8-3/8" long





METAGLAS® Safety Sight Windows

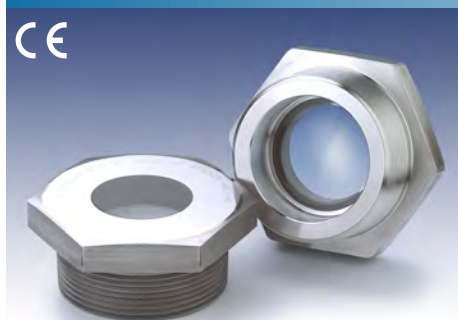
A unique combination of borosilicate glass fused to a metal ring places the glass in compression, creating an amazingly strong and reliable sight glass. METAGLAS is the No. 1 selling sight glass, installed in more locations around the world. Clamp-style, bolt-on, weld-on, and threaded models available.

- METAGLAS safety glass with Factory Mutual Approval (FM)
- Borosilicate Glass to DIN7080
- Temperature: to 572° F (300° C)
- Carbon, stainless and Hastelloy fused to borosilicate glass to DIN7079

METACLAMP® Sanitary Clamp Sight Glass

- For sanitary tri-clamp connection
- Borosilicate glass to USP Type I and DIN7080
- USP Class VI (tested to confirm biocompatibility)
- BPE Compliant and TÜV approved
- Sight glass fused to metal conforming to DIN7079
- Standard surface finish of 10 Ra μ -in (0.25 μ m)

- Material to ASTM/ASME, TÜV and DIN/EN standards
- Certificate of Conformity to EN 10204-3.1B or 3.1A
- Pressure Equipment Directive 97/23/EG
- Duplex and Hastelloy, sanitary clamp connection
- Sizes: ½" to 12"



METAGLAS Type 61 Threaded

- Borosilicate glass to DIN7080
- Sight glass fused to metal conforming to DIN7079
- Pressure Equipment Directive 97/23/EG 02/98, Module H (DIN/EN/ISO 9001)

- AD 2000 Standards W0/TRD 100
- Materials to VdTÜV specifications and the DIN/EN designated standards
- Ring material: Carbon steel (1.0570), stainless steel (1.4462), Hastelloy

Visual Flow Indicators and Full View Visual Flow Indicators

- Tempered borosilicate glass
- Independently bolted, cast metal glass retainers
- Stainless steel glass retainers and Gylon® gaskets (stainless steel units)
- Threaded, flanged and full-view units available

- Investment cast surface finish
- Acrylic enamel coating (carbon steel unit)
- In-stock delivery onto the back of light, reduces unwanted glare



Sterile Visual Flow Indicators

- Ideal for high purity applications
- Compatible with SIP/CIP (Sterilize-In-Place/Clean-In-Place) processes
- Full material traceability ASME (BPE standards)
- 316L is standard, special alloys available

- All gaskets meet USP Class VI, are FDA compliant and are fully traceable
- Gasket materials: EPDM, Silicone, Viton, or FEP jacketed silicone
- Sanitary clamp connection
- Units available from stock in tube OD sizes 3/8"- 4"

Weld-On Sight Glasses



DIN28120 and Low Pressure

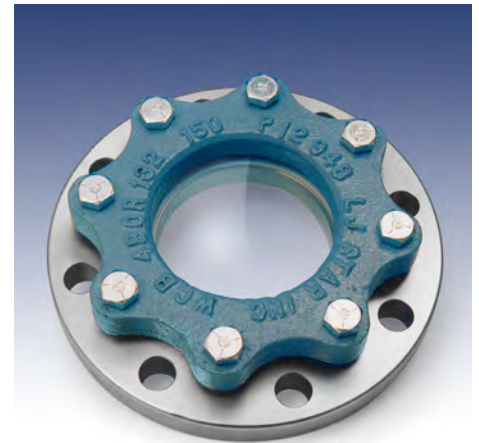
Industrial sight glass assembly with glass sandwiched between two gasketed metal rings. The bottom ring is welded to the vessel. High and low pressure models.

- Circular pad flange assembly for welding into or onto vessel wall
- Complete with fully gasketed glass disc and studs/bolts
- Glass: Borosilicate or quartz
- Standard sizes DN 50-200
- View diameter 80-225 mm (3" to 9")
- Operating temperature 536° F (280° C) with borosilicate glass to DIN7080, high temperature designs available
- Up to 235 psi; low pressure units up to 15 psi
- Materials: stainless, carbon steels and Hastelloy
- ASME code weld pad material available
- Custom built versions available
- Also available with METAGLAS (FM Approved)

Bolt-On Sight Glasses

Bolt-on sight glass units consist of a base with raised face flange to fit standard ANSI Class 150 flange nozzles. The glass disc, either borosilicate or quartz, is clamped in place by a gasketed glass retainer held by threaded bolts.

- Units are Full ANSI rated
- Viewing diameter 2" to 8"
- Operating Temperature: 500° F (260° C) with borosilicate glass, high temperature designs available
- Standard alloys – 316 stainless steel; carbon steel
- Standard gasket materials Gylon 3504
- Standard Window Material Tempered borosilicate glass
- Models available with METAGLAS option for high pressure up to 600# classes (FM Approved)
- PFA lining available for added corrosion resistance
- Optional glass protection shields (FEP and Mica)



MV-ME Light and Window Combos



An all-stainless steel combination of luminaire MV and Series MV sight glasses. Eliminate the cost of a separate light port by combining the sight glass and light together.

- Operating Voltage: 24 V and 120 V
- Power: up to 50 W
- Nominal sizes: DN 65 to DN 125
- Standard unit fitted with momentary push button on/off switch

MetaPlex® Industrial Glass-Free Sight Windows



A sight window made from an optical grade polymer formed into a stainless steel ring. It mounts via a sanitary clamp that speeds removal during cleaning. MetaPlex® sanitary windows offer greater toughness and temperature performance. Ideal for food & beverage, brewery, chemical and pharmaceutical applications.

- Glass-like transparency with enhanced safety
- Sterilizable with steam, gamma and e-beam
- Suitable for CIP & SIP cycles
- High purity with low leachables
- Up to 100° C normal operating conditions
- ASME BPE Compliant
- Good chemical resistance to acids, alkalis (caustics) and alcohols
- No BPA, BPB or BPXs that contaminate process media
- Sizes: 1 to 4 inches
- Mounting: Sanitary clamp connection

Obround and Rectangular Sight Glasses

Tall narrow sight glass allows operators to see the level of liquid inside a vessel. Unlike electronic instruments that measure level, a level gauge is simple and fail-safe. The Obround and Rectangular weld-on sight glass can be welded into a pipeline or vessel for accurate flow or level indication.

- Glass: Borosilicate or quartz
- Obround operating temperature: 500° F (260° C) with borosilicate glass, high temperature designs available
- Rectangular operating temperature: 470° F (243° C) with borosilicate glass
- Up to 150 psi
- Complete with fully gasketed glass plate and bolting
- Obround sizes 1" x 6" to 4" x 24" (view)
- Rectangular sizes: 133 to 1794 mm (5.2" to 70.6") long, 70 mm (2.8") wide
- Materials: stainless and carbon steel, Hastelloy
- ASME code weld pad materials
- Custom built versions available



Cameras and EX Cameras



Easy to install on sight ports, they may also be used to monitor areas at a distance. Available in fixed-focal length, zoom and explosion-proof models.

Camera

- Power: 24 V from power supply, transformer supplied
- Housing: polished stainless steel
- Size: 74 mm dia. x 130 mm length
- Resolution: 480 lines, 0.4 megapixels
- Zoom lens: 10X optical, x4 digital
- Bracket mount or sanitary tri clamp adapter

EX Camera

- Power: 12 V from power supply, transformer provided
- Explosion proof: EX Zones 1, 2, 21 and 22, Group IIc and IIIc
- Housing: polished stainless steel (Type K55/Zoom is K25)
- Size: Fixed Lens 78 mm dia. x 163 mm length, Zoom Lens 71 mm dia. x 140 mm length
- Resolution: 480 lines, 0.4 megapixels
- Zoom lens: 10X optical, x4 digital
- Bracket mount or sanitary tri clamp adapter



Bubble Traps



Many processes use chromatography that results in by-product gas that must be removed. Our trap provides a sanitary, crevice-free, self-draining means of removing unwanted gas and bubbles from process fluids.

- Glass: borosilicate (acrylic option).
- Pressure: up to 87 PSI @30° C
- ASME BPE compliant. Full traceability on wetted components.
- EHEDG Approved, self-draining, crevice-free design
- Available in stainless steel (Electro Polished) and different alloys
- Sizes: ferrule ports ½" to 2", trap diameter 4" to 10"
- Mounting: clamp connections

Sanitary Clamps

Reliable, fast, leak-free connection to meet BPE and FDA requirements for sterile process control, as well as disassembly, cleaning and reconfiguration.

Series SH 316 SS Clamp

- Unique profile, twin hinge design
- Pressure: up to 870 psig
- Temperature: 450° F and higher
- Material: 316 stainless steel
- Sizes: ½" to 12"
- Bolt: single or double
- Hinge: 2 pin
- Fastener: wing nut or hex nut
- Standards: CE



Safety Clamp

The Safety Clamp protects workers by assuring the bolting mechanism cannot release suddenly while a worker is loosening the bolt.

- Material: 316 stainless steel
- Sizes: ½" to 12"
- Pressure: up to 870 psig
- Temperature: 450° F and higher
- Bolt: safety feature prevents unintentional opening
- Hinge: 2 pin
- Fastener: wing nut or hex nut
- Standards: CE

Series SSH High Pressure Clamp

- Unique profile, two bolt design
- Pressure: up to 1,450 psig
- Temperature: 450° F and higher
- Material: 304 stainless steel (316 SS optional)
- Sizes: ½" to 6"
- Bolt: double
- Hinge: none
- Fastener: Hex nut brass or stainless steel
- Standards: CE



Sanitary Clamps (continued)



Series ASME Clamp

- Pressure: up to 2,480 psig
- Temperature: 450° F and higher
- Material: 316 stainless steel (all parts traceable)
- Sizes: 1" to 12"
- Bolt: triple
- Hinge: for ease of assembly
- Fastener: wing nut or hex nut
- Standards: ASME Section VIII Appendix 24

Wiper I & II

Manual wipers for LumiGlas sight glasses and sight windows, such as the DIN28120 style sight glasses.

- For manual cleaning on inside glass surface
- **Wiper I:** vacuum tight and up to 85 psig @ 400° F (204° C)
- **Wiper II:** vacuum tight and up to 230 psig @ 428° F (222° C)
- 316 stainless steel wetted metal parts
- Wiper blade available in Teflon or Silicone



Gauge Glass and Replacement Glass



Replacement gauge glass, gaskets and mica shields. Borosilicate glass offers high visual clarity, greater chemical and thermal shock resistance, and high pressure safety. Gaskets and Mica Shields are also available.

- Borosilicate glass
- Temperature: up to 572° F
- Pressure: up to 6000 psi
- Sizes: 0 through 11
- Special tempered reflex and transparent level gauge glasses and disc sight glasses can be supplied in accordance to:
 - DIN7080/7081
 - BS 3463
 - JIS B 8211
 - MIL - G - 16356 D
 - Auer USA specification
 - Customer specification
 - Aluminosilicate glass on request



You'll Look Better.



**Contact us for your
local distributor's
information.**

P.O. Box 1116
Twinsburg, OH 44087
Phone: (330) 405-3040
Fax: (330) 405-3070
getmoreinfo@ljstar.com
www.ljstar.com

METAGLAS® and METACLAMP® are registered trademarks of Herberts Industrieglas;
Lumiglas® is a registered trademark of F.H. Papenmeier GmbH & Co. KG; LumiFlo®
is a registered trademark of L.J. Star Incorporated.